

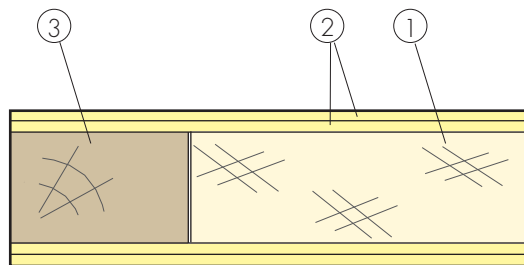
Construction of the test specimen:

Door leaf 959x 1972 x 45 mm

1 : Solid particle board 33 VL

2 : HDF 2 x 3 mm

3 : Hardwood 90 mm



Test opening: 2,00 m²

Weight of test specimen: 34.2 kg/m²

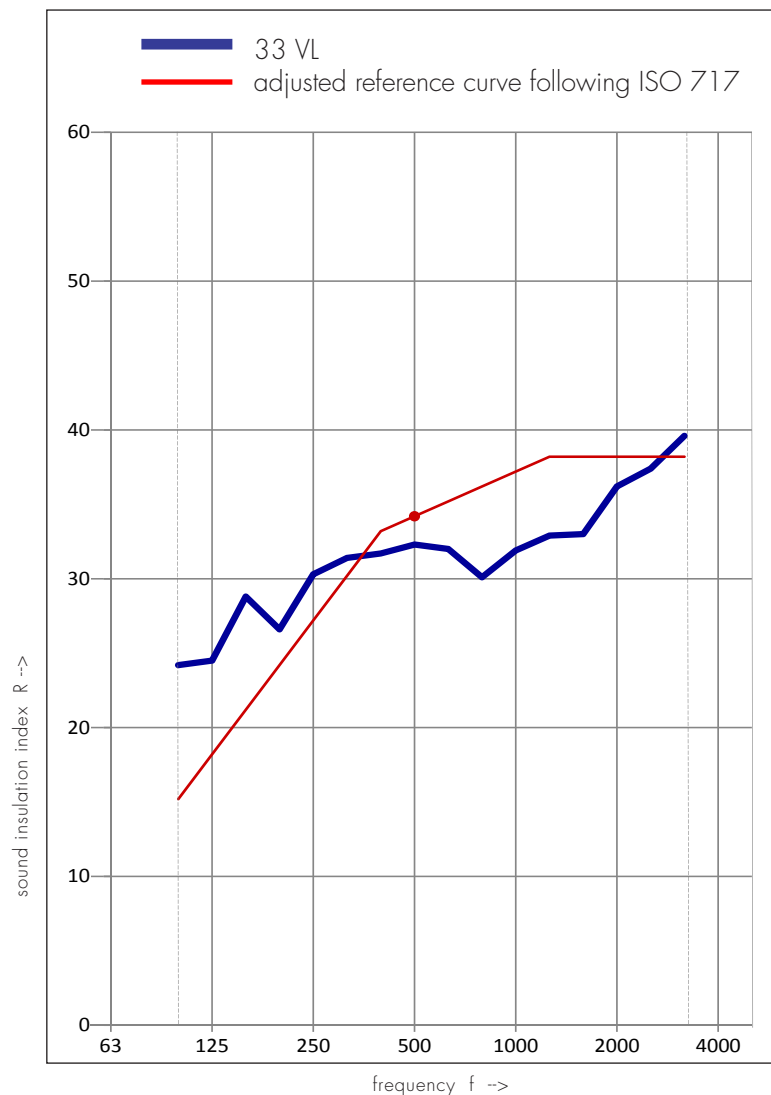
Temperature [°C]: 18

Humidity [%]: 56

Source room volumes: 72 m³

Receiver room volumes: 70 m³

frequency [Hz]	R [dB]
50	--
63	--
80	--
100	24,2
125	24,5
160	28,8
200	26,6
250	30,3
315	31,4
400	31,7
500	32,3
630	32,0
800	30,1
1000	31,9
1250	32,9
1600	33,0
2000	36,2
2500	37,4
3150	39,6
4000	41,7
5000	43,4



Airborne sound

insulation $R_{WV}(C, C_{tr}) = 34,2 (-1, 1; -2,7)$ dB

C50_3150: - C50_5000: - C100_5000: -0,1

Ctr50_3150: - Ctr50_5000: - Ctr100_5000: -2,5