

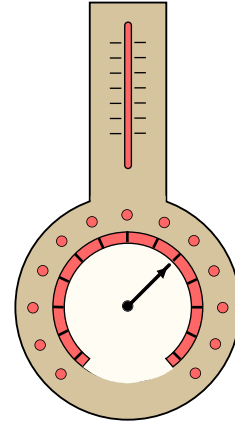
Climate - Classes



Recommended Use

Doors, separating rooms with different temperatures and humidity, are likely to distort. This is due to swelling and shrinkage of the involved components.

During the test, after pre-conditioning, the door is exposed to different climates each side, following European Norm DIN EN 1121. The test is continued until deformation and distortion end. This is expected to endure 28 days.

- pre-conditioning EN 1294
- different climates EN 1121
- measurement of evenness EN 952



Climate-Class - EN 1121	a	b	c
Stress	normal	medium	high
Lab-Test: different climates acc. - opening side emc = equilibrium moisture content - rebated side	23°C / 30% rel. hum emc = 7,5%	23°C / 30% rel. hum emc = 7,5 %	23°C / 30% rel. hum emc = 7,5 % 3°C / 80% rel. hum emc = 16 %
Evaluation EN 12219 classes 0 ... 4	class 2 rating	 Warping Longitudinal bending Transversal bending	max 4 mm max 4 mm max 2 mm  Confirms with RAL GZ426
Climate-Class - RAL GZ426	I	II	III
Recommended Use: domestic flat entrance office hospital school hotel	○ ○ ○	○ ○ ○	○ ○
Possible Door-Constructions	strips of tube board	tube board; solid board	solid board, skins with aluminium foil, special internal stiles.